

## WP/MULTI EVO-A PRESSURE BOOSTER SET WITH HORIZONTAL STAINLESS STEEL PRESSURE TANK

The Pressure booster set WATERPRESS are made with self-priming multi-stage centrifugal pumps **Multi EVO-A**. They are supplied wired, complete with a 24 l or 50 l expansion module, ready for installation and use. All models are certified for use with drinking water (ACS).

### ADVANTAGES

- Reduces water hammers
- Ideal as a water supply system in the building
- Ready to use
- Reduction of the starting frequency with the 50 l tank
- Very easy to install

### CONSTRUCTION FEATURES

- Electromechanical pressure switch (max 6 bar) set at: min 2 ÷ max 3 bar.
- Pump start-up pressure adjustable from 1.5 to 3 bar
- Pressure gauge (6 bar).
- 5-way moulded brass plated connector.
- Expansion tanks:
  - 50 l expansion tank in painted steel (models WP / Multi EVO-A 3-40 M-50l and WP / Multi EVO-A 5-50 M-50 l).
  - 24 l expansion tank in painted steel (model WP / Multi EVO-A 3-40 M).
  - 24 l expansion tank in painted steel (model WP / Multi EVO-A 5-50 M-SS).
- Tuboflex hydraulic connection.
- Power cable 1.5 m H05 RN-P with plug

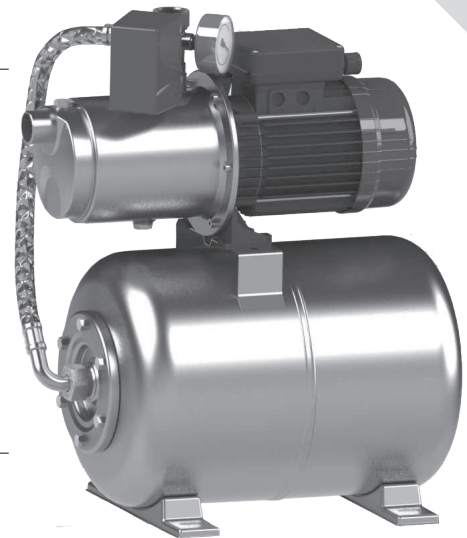
### SPECIFICATIONS:

#### PUMP

- Type of liquid: clean water without suspended solids or abrasive material
- Maximum temperature of the liquid 50°C
- Maximum intake height 8 m with pump installed correctly
- Maximum operating pressure 8 bar

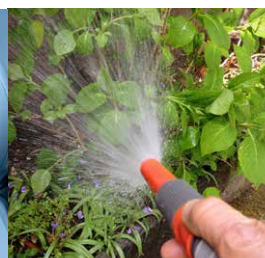
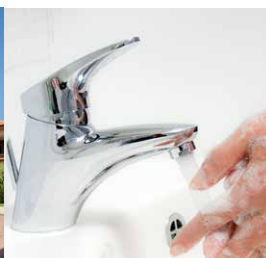
#### MOTOR

- Closed, ventilated from outside (TEFC)
- 2 poles, 50 Hz (n=2850 rpm)
- Degree of protection IP 55
- Insulation class F
- Single-phase power supply with capacitor permanently on and thermal protection built into the motor casing.
- Three-phase power supply with external protection provided by the user.



### APPLICATIONS

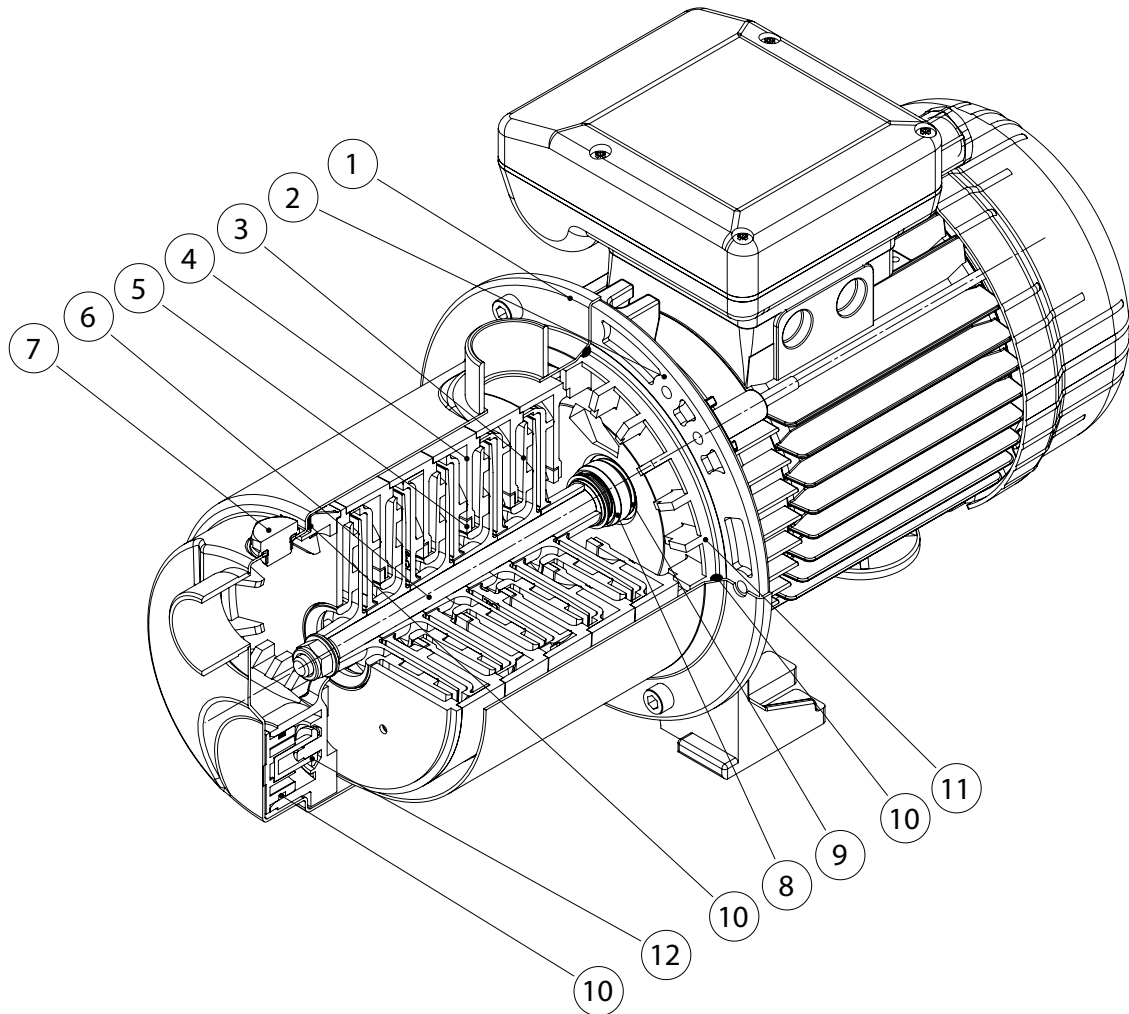
- Lifting and distribution of water in domestic systems
- Pressurization systems
- Irrigation
- Washing systems



# WP/MULTI EVO-A

## PRESSURE BOOSTER SET WITH HORIZONTAL STAINLESS STEEL PRESSURE TANK

### CONSTRUCTION FEATURES



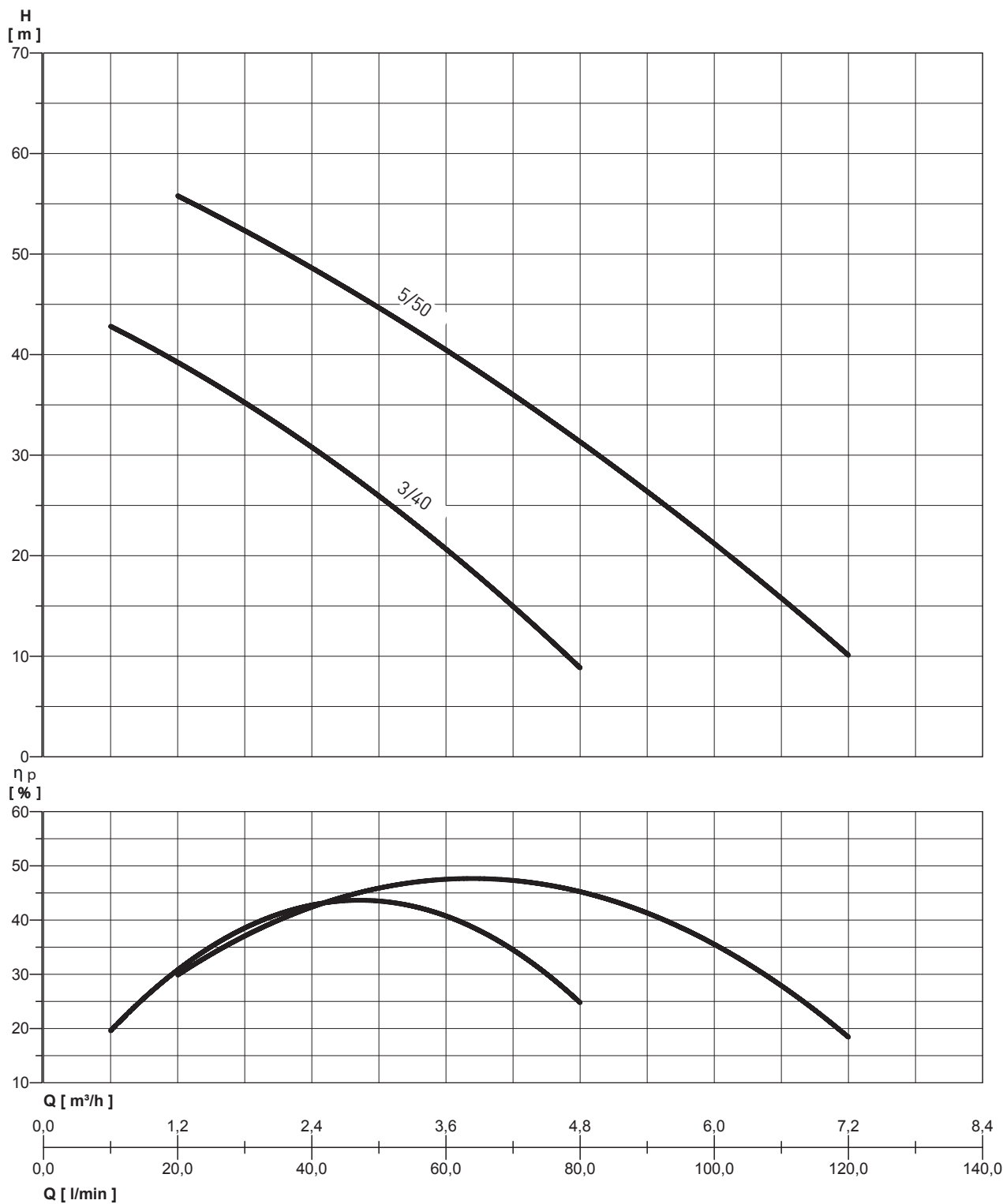
### TABLE OF MATERIALS

Ref.	Component	Material
1	Pump body	Stainless steel Europe: EN10088-1 X5CrNi18-10 (1.4301) USA: AISI 304
2	Motor casing	Die-cast aluminium
3	Impeller	PPO reinforced with fibreglass
4	Diffuser	PPO reinforced with fibreglass
5	Wear ring	PTFE
6	Shaft (hydraulic part)	Stainless steel Europe: EN10088-1 X5CrNi18-10 (1.4301) USA: AISI 304
7	Inlet / outlet caps	Stainless steel Europe: EN10088-1 X8CrNiS18-9 (1.4305) USA: AISI 303
8	Mechanical seal	Carbon graphite / NBR / SS Europe: EN10088-1 X5CrNi18-10 (1.4301) USA: AISI 304
9	Counterface	Ceramic / NBR
10	Gaskets	NBR 70 Shore A
11	Seal holder plate	PPO reinforced with fibreglass
12	Priming valve	PPO reinforced with fibreglass

# WP/MULTI EVO-A 5

## PRESSURE BOOSTER SET WITH HORIZONTAL STAINLESS STEEL PRESSURE TANK

### HYDRAULIC PERFORMANCE



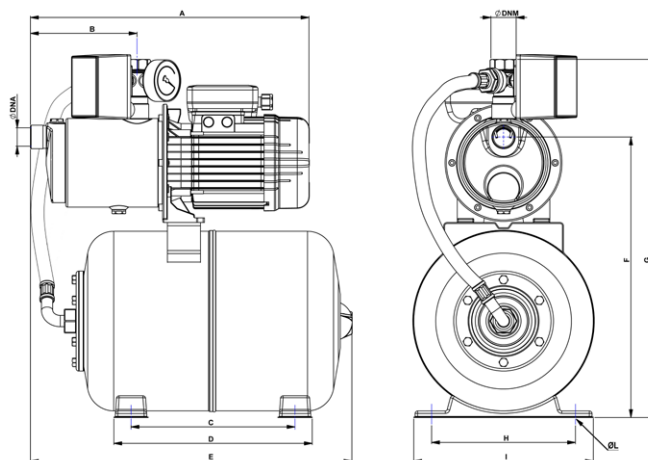
# WP/MULTI EVO-A 5

## PRESSURE BOOSTER SET WITH HORIZONTAL STAINLESS STEEL PRESSURE TANK

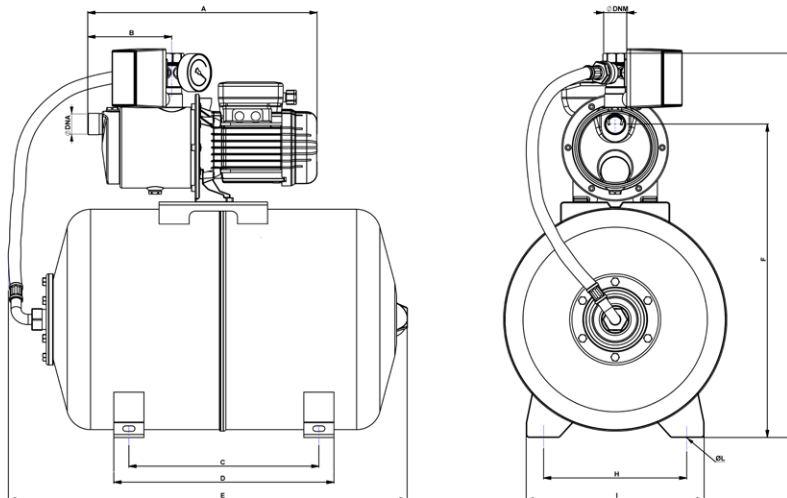
### PERFORMANCE TABLE

MODEL	Nominal power (P2)		Absorbed power (P1)		VOLT (V)	In (A)	μF	0	total head in water column metres											
	HP	kW	HP	kW					10	20	30	40	50	60	80	100	120			
WP / MULTI EVO-A 3-40 M	0,67	0,5	1,1	0,8	1~230	3,7	12,5		42,5	39,5	35,5	31	25,5	20,5	9					
WP / MULTI EVO-A 3-40 M-50I	0,67	0,5	1,1	0,8	1~230	3,7	12,5													
WP / MULTI EVO-A 5-50 M-SS	1,34	1	1,8	1,35	1~230	6,2	20													
WP / MULTI EVO-A 5-50 M-50I	1,34	1	1,8	1,35	1~230	6,2	20		56	52	48,5	45	40,5	31	21,5	10				

24 l



50 l



### OVERALL DIMENSIONS AND WEIGHTS

MODEL	Dimensions mm.												WEIGHT (Kg)
	A	B	C	D	E	F	G	H	I	L	DNA	DNM	
WP / MULTI EVO-A 3-40 M	380	139	245	295	495	410	530	190	240	9	1"	1"	13,6
WP / MULTI EVO-A 3-40 M-50I	380	139	315	365	660	520	640	242	295	9	1"	1"	18
WP / MULTI EVO-A 5-50 M-SS	422	162	248	300	490	435	540	218	272	11	1"	1"	14
WP / MULTI EVO-A 5-50 M-50I	422	162	215	365	660	520	640	242	295	9	1"	1"	20,5