

NOCCHI VACUSYSTEM COLLECTION STATIONS AND WASTE WATER LIFTING

VACUSYSTEM 200 is an automatic pumping station, pre-assembled and ready to use. The ideal solution when waste water is collected at a lower level than the main sewage manifold. Assembled with PRIOX series electric submersible pumps.

MOTOR

- Dry motor.
- Protection rating IP 68.
- Insulation class F.
- Single phase power supply with permanently activated capacitor and thermal cutout protection incorporated in the motor winding.
- Fully insulated cable connection chamber.
- Self-lubricating ball bearings.
- Rotation speed 2850 rpm.

APPLICATION DATA

- Type of liquid: waste water with suspended solid bodies of maximum size 40 mm.
- Maximum liquid temperature: 40°C.
- Minimum drainage level: 60 mm.
- Walkover cover.

DESIGN SPECIFICATIONS

- The standard pumping station comprises:
- Tank: polyethylene with capacity of 175 L, with cover complete with seal to ensure watertight protection from liquid and the risk of gas formation.
- Inlet manifolds DN 110, outlet in PVC 2" and bleed tube connector DN 50.
- Submersible pump PRIOX 300/9 M AUT, PRIOX 460/13 M AUT.



TABLE OF MATERIALS

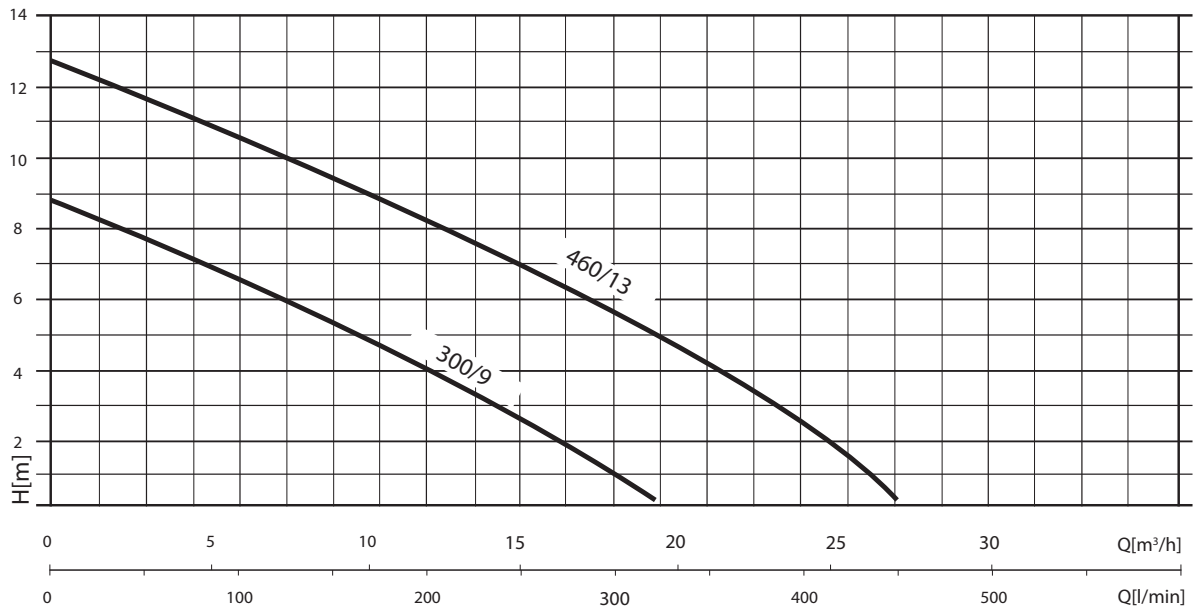
Component		Material
1	Pump body	Stainless steel X5 CrNi 1810 (AISI 304)
2	suction base	Stainless steel X5 CrNi 1810 (AISI 304)
3	Impeller	Cast stainless steel X5 CrNi 1810 (AISI 304)
4	Power cable	10 m H07 RN-F
5	Motor shaft	Stainless steel X 12 CrNi 1809 (AISI 416)
6	Mechanical gasket	Graphite
7	Counterface	Ceramic
8	Secondary seal	Lip seal in rubber NBR
9	V-ring sand guard	Rubber NBR

Lubricated in oil chamber

NOCCHI VACUSYSTEM

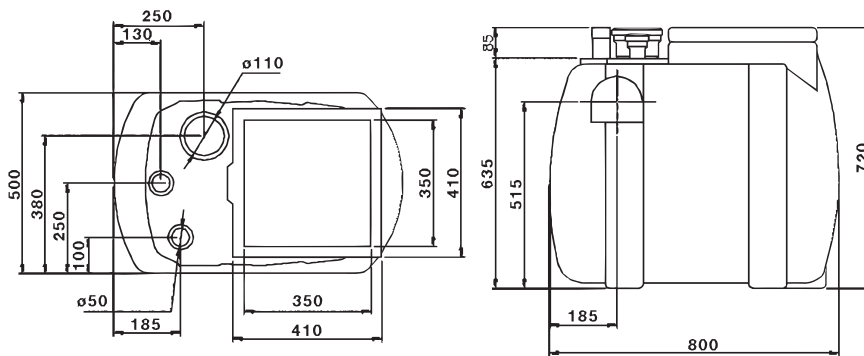
COLLECTION STATIONS AND WASTE WATER LIFTING

HYDRAULIC PERFORMANCE



PERFORMANCE TABLE

MODEL	Power Motor (P2)		Power Motor (P1)		VOLTAGE (V)	In (A)	μF	Q	L/ min m3/h	50	100	150	200	150	300	400
	HP	kW	HP	kW						3	6	9	12	15	18	24
VS 200-P 300	0.8	0.6	1.2	0.9	1 - 230	4.1	12.5	m.c.a./ m.w.c.	7.7	6.4	5	3.8	2.3	1		
VS 200-P 460	1.4	1	2.2	1.6	1 - 230	7.2	20		11.8	10.8	9.8	8.5	7	5.5	2	



OVERALL DIMENSIONS AND WEIGHTS

MODEL	Dimensions (mm)																	Weight (kg)
	A	B	C	D	E	F	G	H	I	L	M	N	O	P	Q	R	S	
VS 200 - P 300 M	500	380	250	100	185	250	130	410	350	800	410	350	635	515	720	185	85	27
VS 200 - P 460 M	500	380	250	100	185	250	130	410	350	800	410	350	635	515	720	185	85	29.2

NOCCHI VACUSYSTEM

COLLECTION STATIONS AND WASTE WATER LIFTING

DESCENT DEVICE

VACUSYSTEM 200 S is an automatic pumping station, pre-assembled and ready to use. The ideal solution when waste water is collected at a lower level than the main sewage manifold. Assembled with PRIOX series electric submersible pumps.

MOTOR

- Dry motor.
- Protection rating IP 68.
- Insulation class F.
- Single phase power supply with permanently activated capacitor and thermal cutout protection incorporated in the motor winding.
- Fully insulated cable connection chamber.
- Self-lubricating ball bearings.
- Rotation speed 2850 rpm.

APPLICATION DATA

- Type of liquid: waste water with suspended solid bodies of maximum size 40 mm.
- Maximum liquid temperature: 40°C.
- Minimum drainage level: 60 mm.
- Walkover cover.

DESIGN SPECIFICATIONS

- Tank:
- polyethylene with capacity of 175 L, with cover complete with seal to ensure watertight protection from liquid and the risk of gas formation.
- Inlet manifolds DN 110, outlet 2" and bleed tube connector DN 50
- Descent device
- Electrical control and protection panel (for three phase electric pumps)
- Float with 10 m cable 2x1 H07 RN-F (for three phase electric pumps)
- Submersible pump: PRIOX 300/9 M AUT, PRIOX 460/13 M AUT, PRIOX 300/9 T, PRIOX 460/13 T



TABLE OF MATERIALS

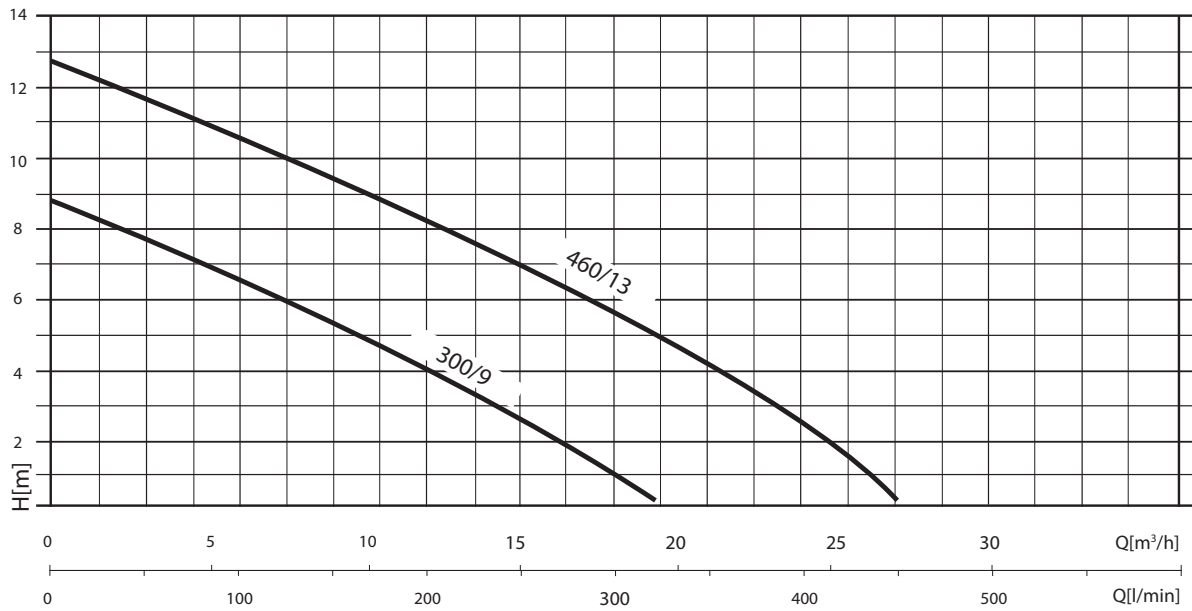
Component		Material
1	Pump body	Stainless steel X5 CrNi 1810 (AISI 304)
2	Suction base	Stainless steel X5 CrNi 1810 (AISI 304)
3	Impeller	Cast stainless steel X5 CrNi 1810 (AISI 304)
4	Power cable	10 m H07 RN-F
5	Motor shaft	Stainless steel X 12 CrNi 1809 (AISI 416)
6	Mechanical gasket	Silicon carbide
7	Counterface	Silicon carbide
8	Secondary seal	Lip seal in rubber NBR
9	V-ring sand guard	Rubber NBR

Lubricated in oil chamber

NOCCHI VACUSYSTEM

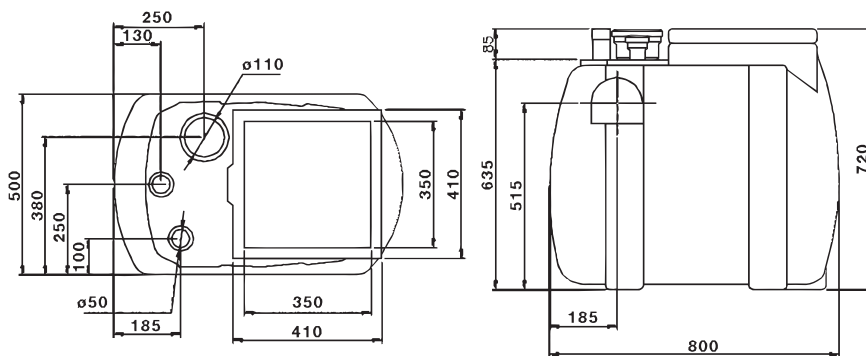
COLLECTION STATIONS AND WASTE WATER LIFTING

HYDRAULIC PERFORMANCE



PERFORMANCE TABLE

MODEL	Power Motor (P2)		Power Motor (P1)		VOLTAGE (V)	In (A)	µF	Q	L/min m3/h	50	100	150	200	250	300	400	
	HP	kW	HP	kW						3	6	9	12	15	18	24	
VS 200 S-P 300 M	0.8	0.6	1.2	0.9	1 ~ 230	4.1	12.5	m.c.a. / m.w.c.	7.7	6.4	5	3.8	2.3	1			
VS 200 S-P 300 T	0.8	0.6	1.2	0.9	3 ~ 400	1.55	7.7		6.4	5	3.8	2.3	1				
VS 200 S-P 460 M	1.4	1	2.2	1.6	1 ~ 230	7.2	20		11.8	10.8	9.8	8.5	7	5.5	2		
VS 200 S-P 460 T	1.4	1	2	1.45	3 ~ 400	2.4	11.8		10.8	9.8	8.5	7	5.5	2			



OVERALL DIMENSIONS AND WEIGHTS

MODEL	Dimensions (mm)																	Weight (kg)
	A	B	C	D	E	F	G	H	I	L	M	N	O	P	Q	R	S	
VS 200 S - P 300 M	500	380	250	100	185	250	130	410	350	800	410	350	635	515	720	185	85	37
VS 200 S - P 300 T	500	380	250	100	185	250	130	410	350	800	410	350	635	515	720	185	85	39
VS 200 S - P 460 M	500	380	250	100	185	250	130	410	350	800	410	350	635	515	720	185	85	38.8
VS 200 S - P 460 T	500	380	250	100	185	250	130	410	350	800	410	350	635	515	720	185	85	40.6

NOCCHI VACUSYSTEM

COLLECTION STATIONS AND WASTE WATER LIFTING

2 ELECTRIC PUMPS, 2 DESCENT DEVICES, ELECTRICAL CONTROL AND PROTECTION PANEL

VACUSYSTEM 500 is an automatic pumping station, pre-assembled and ready to use. The ideal solution when waste water is collected at a lower level than the main sewage manifold. Assembled with PRIOX series electric submersible pumps.

MOTOR

- Dry motor.
- Protection rating IP 68.
- Insulation class F.
- Single phase power supply with permanently activated capacitor and thermal cutout protection incorporated in the motor winding.
- Fully insulated cable connection chamber.
- Self-lubricating ball bearings.
- Rotation speed 2850 rpm.

APPLICATION DATA

- Type of liquid: waste water with suspended solid bodies of maximum size 40 mm.
- Maximum liquid temperature: 40°C.
- Minimum drainage level: 60 mm.
- Walkover cover.



DESIGN SPECIFICATIONS

- Tank:
- polyethylene with capacity of 175 L, with cover complete with seal to ensure watertight protection from liquid and the risk of gas formation.
- Inlet manifolds DN 110, outlet 2" and bleed tube connector DN 50.
- Descent device.
- Electrical control and protection panel (for three phase electric pumps).
- Float with 10 m cable 2x1 H07 RN-F (for three phase electric pumps).
- Submersible pump: PRIOX 300/9 M, PRIOX 460/13 M, PRIOX 300/9 T, PRIOX 460/13 T.



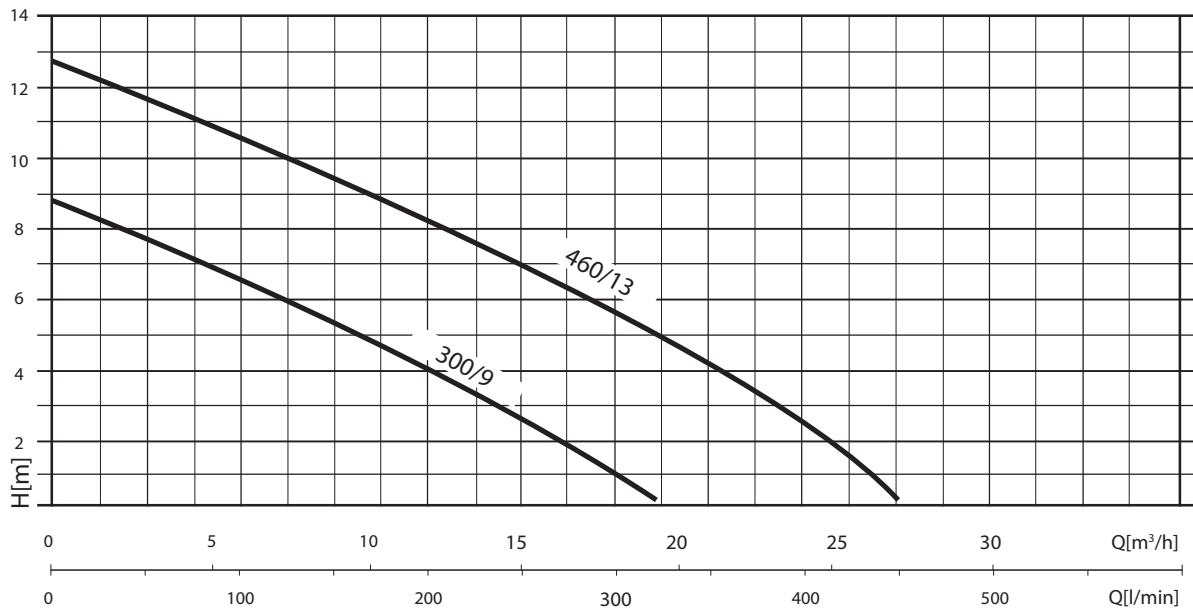
TABLE OF MATERIALS

Component		Material
1	Pump body	Stainless steel X5 CrNi 1810 (AISI 304)
2	Suction base	Stainless steel X5 CrNi 1810 (AISI 304)
3	Impeller	Cast stainless steel X5 CrNi 1810 (AISI 304)
4	Power cable	10 m H07 RN-F
5	Motor shaft	Stainless steel X 12 CrNi 1809 (AISI 416)
6	Mechanical gasket	Silicon carbide
7	Counterface	Silicon carbide
8	Secondary seal	Lip seal in rubber NBR
9	V-ring sand guard	Rubber NBR

NOCCHI VACUSYSTEM

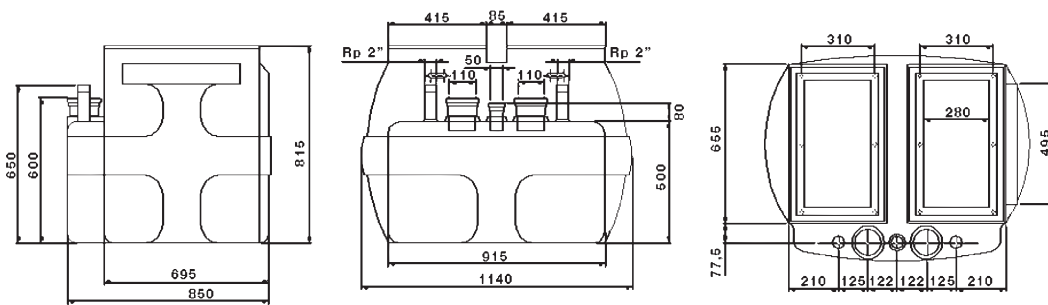
COLLECTION STATIONS AND WASTE WATER LIFTING

HYDRAULIC PERFORMANCE



PERFORMANCE TABLE

MODEL	Power Motor (P2)		Power Motor (P1)		VOLTAGE (V)	In (A)	μF	Q	L/min	50	100	150	200	250	300	400
	HP	kW	HP	kW						3	6	9	12	15	18	24
VS 500 TWIN-P 300 M	0.8	0.6	1.2	0.9	1 - 230	4.1	12.5	m.c.a. / m.w.c.	7.7	6.4	5	3.8	2.3	1		
VS 500 TWIN-P 300 T	0.8	0.6	1.2	0.9	3 - 400	1.55	7.7		6.4	5	3.8	2.3	1			
VS 500 TWIN-P 460 M	1.4	1	2.2	1.6	1 - 230	7.2	20		11.8	10.8	9.8	8.5	7	5.5	2	
VS 500 TWIN-P 460 T	1.4	1	2	1.45	3 - 400	2.4	11.8		10.8	9.8	8.5	7	5.5	2		



OVERALL DIMENSIONS AND WEIGHTS

MODEL	Dimensions (mm)															Weight (kg)
	A	B	C	D	E	F	G	H	I	L	M	N	O	P	Q	
VS 500 TWIN - P 300 M	650	600	695	850	915	500	80	815	415	1140	655	77.5	310	495	280	89.4
VS 500 TWIN - P 300 T	650	600	695	850	915	500	80	815	415	1140	655	77.5	310	495	280	89.4
VS 500 TWIN - P 460 M	650	600	695	850	915	500	80	815	415	1140	655	77.5	310	495	280	93.8
VS 500 TWIN - P 460 T	650	600	695	850	915	500	80	815	415	1140	655	77.5	310	495	280	93.8