

NOCCHI VACUBOX SEWAGE LIFTING STATIONS

NEW2017
PENTAIR

VACUBOX 200 is for bigger domestic wastewater volume and larger storage capacity. Without requiring a great deal of construction work, it disposes of domestic wastewater from laundries, storage or cellar areas.

VACUBOX 200 can be installed as a single as well as a duplex system. The required components for the installation of the pumps are part of the scope of supply. The duplex system provides bigger security in the disposal of wastewater. In normal operation the two pumps operate alternately or at the same time to cope with peak load. The pump to be placed can be selected according to the amount of wastewater, the type of dirty water and the pumping power required. By adjusting the plastic cover frame, the sump cover can be adapted easily and variably to the floor and tile conditions. The unit is compliant with EN 12050 standard.



CONSTRUCTION FEATURES

Water-tight PE tank (240 l) with connecting pieces for two inlets DN 100/150 and one DN 100, connecting piece for ventilation/cable conduit DN 70 and PVC 2" outlet. VACUBOX 200-50 as underfloor version is equipped with adjustable cover frame with siphon. The above floor version is equipped with odour-tight plastic cover (screwed fitted).

All junctions (tank/plastic cover frame/cover plate) are fitted with profiled seals.

PRIOX submersible pump.

USAGE DATA

- Type of liquid: waste water with suspended solids of maximum size 50 mm.
- Maximum liquid temperature 40°C
- Minimum drainage level 60 mm
- Walkover cover

MOTOR

- Safe to run dry
- Degree of protection IP68
- Insulation class F
- Single-phase power supply with capacitor permanently on and thermal protection built into the motor casing
- Cable connection chamber completely insulated
- Self-lubricating ball bearings
- Speed of rotation 2850 rpm.

TABLE OF MATERIALS

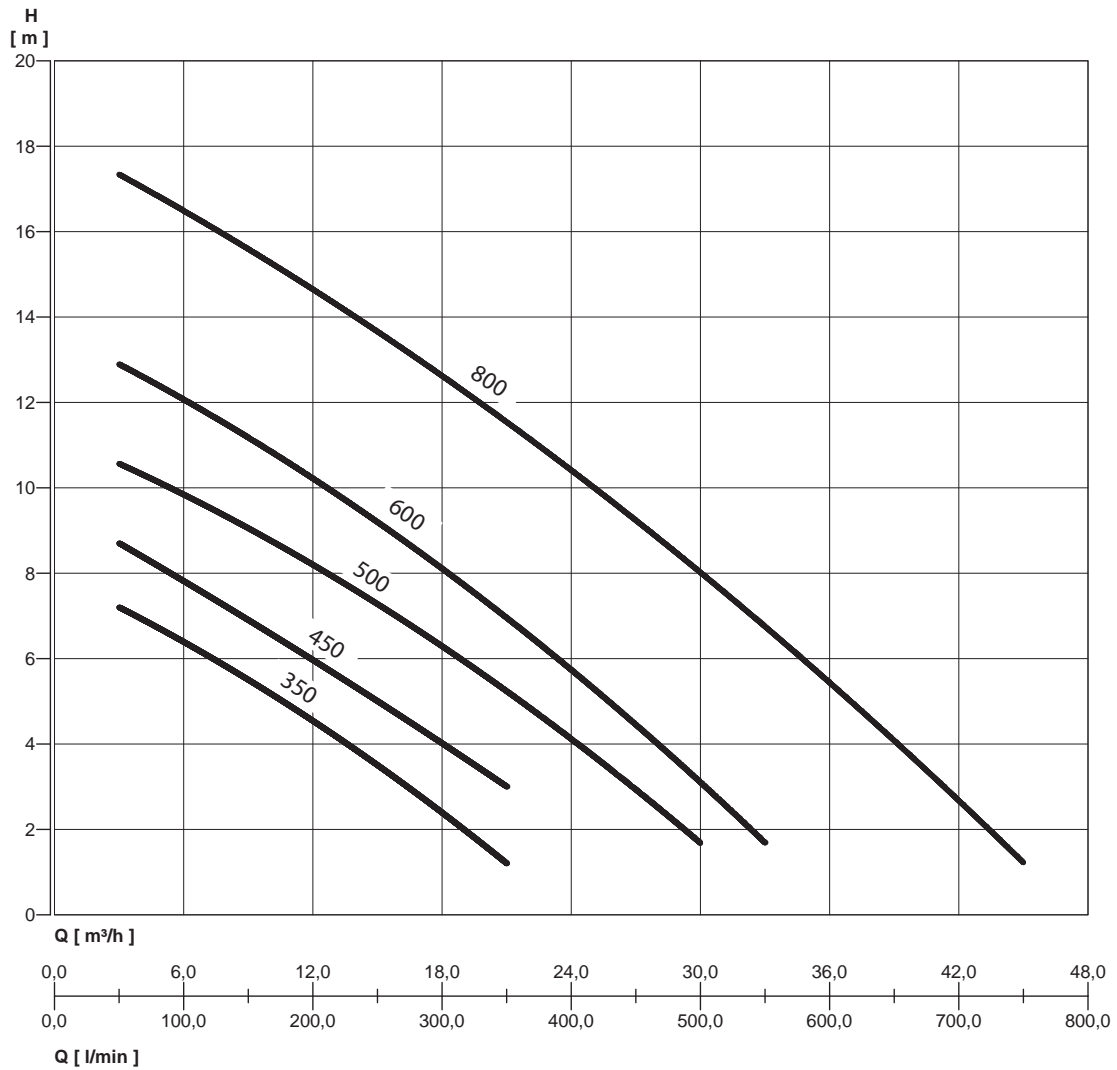
Component		Material
1	Pump body	Stainless steel X5 CrNi 1810 (AISI 304)
2	Suction base	Stainless steel X5 CrNi 1810 (AISI 304)
3	Impeller	Stainless steel X5 CrNi 1810 (AISI 304) casting
4	Supply cable	10 m H07 RN-F
5	Motor shaft	Stainless steel X 12 CrNiS 1809 (AISI 416)
6	Mechanical seal	Graphite
7	Counterface	Ceramic
8	Secondary seal	NBR rubber lip seal
9	V-ring sand guard	NBR rubber



NOCCHI VACUBOX

SEWAGE LIFTING STATIONS

HYDRAULIC PERFORMANCE



VACUBOX

CODE	MODEL
JP48190	VACUBOX 200-50 ABOVE FLOOR VERSION
JP48191	VACUBOX 200-50 UNDERFLOOR VERSION


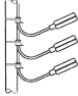
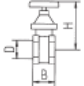




PERFORMANCE TABLE

CODE	MODEL	Motor power (P2)		Motor power (P1)		VOLTAGE (V)	In (A)	μF	Q	m.c.w.								
		HP	kW	HP	kW					l/min	50	150	250	350	500	550	650	750
										m³/h	3	9	15	21	30	33	39	45
N2110210	PRIOX 350/8	0,9	0,65	1,3	0,98	1 ~ 230 V	3,8	14	m.c.w.	7,2	5,5	3,5	1,2					
N2110200	PRIOX 350/8 AUT	0,9	0,65	1,3	0,98	1 ~ 230 V	3,8	14		7,2	5,5	3,5	1,2					
N2110220	PRIOX 350/8	0,9	0,65	1,3	0,98	3 -- 400 V	1,7			7,2	5,5	3,5	1,2					
N2110290	PRIOX 450/9	1	0,8	1,5	1,1	1 ~ 230 V	5	20		8,7	6,9	5	3					
N2110280	PRIOX 450/9 AUT	1	0,8	1,5	1,1	1 ~ 230 V	5	20		8,7	6,9	5	3					
N2110240	PRIOX 500/11	1,4	1	2	1,55	1 ~ 230 V	7	20		10,5	9,2	7,2	5,2	1,7				
N2110230	PRIOX 500/11 AUT	1,4	1	2	1,55	1 ~ 230 V	7	20		10,5	9,2	7,2	5,2	1,7				
N2110250	PRIOX 500/11	1,4	1	1,9	1,4	3 -- 400 V	2,4			10,5	9,2	7,2	5,2	1,7				
N2110260	PRIOX 600/13	1,6	1,2	2,4	1,8	3 -- 400 V	3,1			12,8	11,3	9,3	6,8	3	1,8			
N2110270	PRIOX 800/18	3,2	2,4	4	3	3 -- 400 V	5,5			17,3	15,6	13,7	11,6	8	6,7	4	1,3	

NOCCHI VACUBOX

SEWAGE LIFTING STATIONS

ACCESSORIES

	CODE	MODEL
	UZQ14150	EASYCONTROLLER FOR PRIOX 500/11
	UZQ14140	EASYCONTROLLER FOR PRIOX 600/13 AND PRIOX 350/8
	UZQ14130	EASYCONTROLLER FOR PRIOX 800/18
	UZQ14120-1	EASYCONTROLLER FOR ALL PRIOX MODELS (SINGLE PHASE)
	JP48229	SUBMERSIBLE SWITCH PACK 2"
	JP48299	SUBMERSIBLE SWITCH PACK, FOR GREASE-CONTAINING WASTE WATER
	JP44787	STOP VALVE, 2" (DN 50), PN 16
	JP27484	SPECIAL FILTER WITH HOUSING
	JP48280	GUIDE RAIL SYSTEMS GR 50 (for duplex unit order 2x)
	JP48215	GROUNDWATER SEALING
	JP48282	SUMP EXTENSION (165-265 mm)

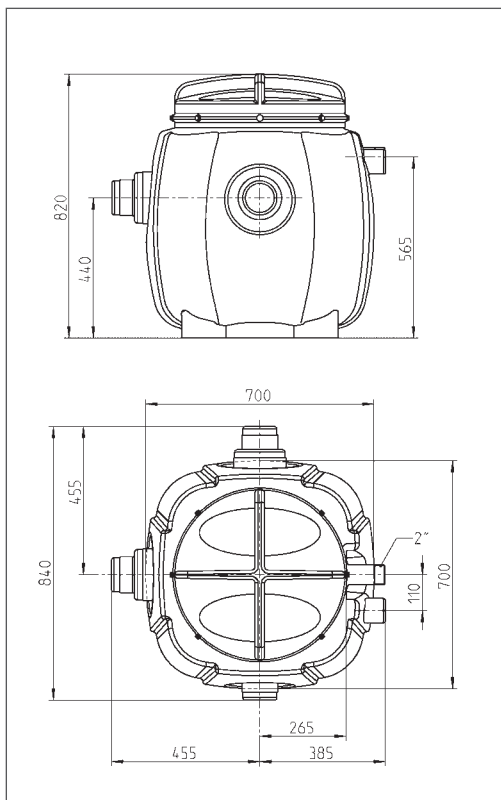
NOCCHI VACUBOX

SEWAGE LIFTING STATIONS

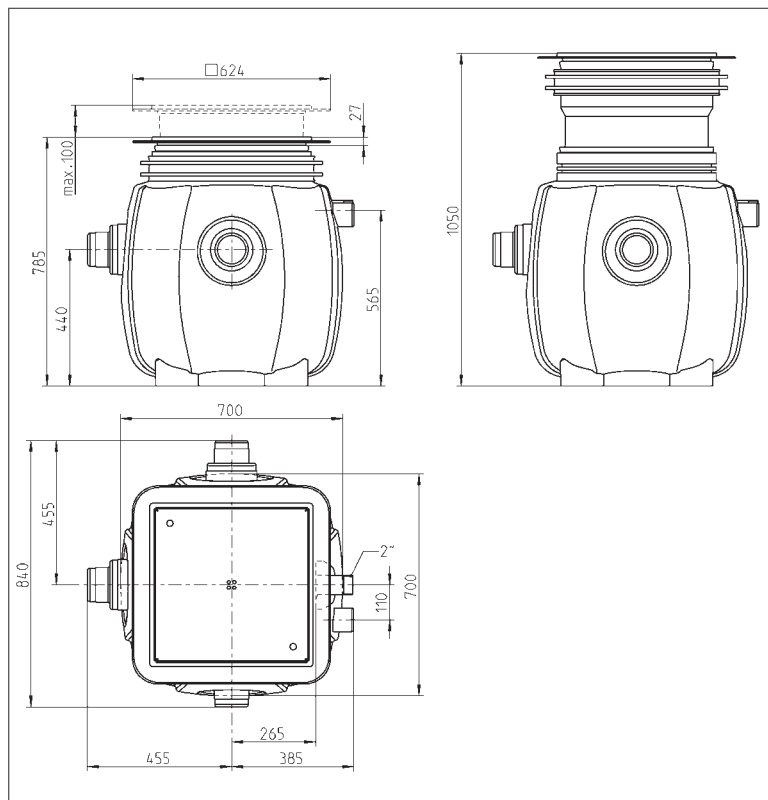
OVERALL DIMENSIONS AND WEIGHTS

MODEL	Dimensions (mm) L x W x H	WEIGHT (kg)
VACUBOX 200 ABOVE FLOOR	840x840x820	29
VACUBOX 200 UNDERFLOOR	840x840x795	37

DIMENSIONS (ABOVE FLOOR VERSION)



DIMENSIONS (UNDERFLOOR VERSION)



SCOPE OF SUPPLY

Plastic sump for use with EN 12050 tested pumps. Pressure pipe with two swing-type check valves, plug for cable conduit, without pumps.

Underfloor version with level-compensating plastic cover frame with cover plate and odour trap for floor drain.

Above floor version with cover and seal.