

NOCCHI MULTINOX-A

SELF-PRIMING MULTISTAGE CENTRIFUGAL PUMPS

STRONG AND RESISTANT, SELF PRIMING, HIGH SUCTION CAPABILITY, SPECIAL PATENTED BRASS VALVE FOR CLOSURE DURING THE PRIMING STAGE

The horizontal multistage centrifugal self-priming MULTINOX-A pumps are suitable for developing a considerable pressure and flow rate with extremely silent operation and with minimum electrical energy consumption.

MOTOR

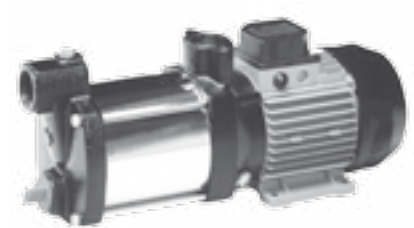
- Enclosed, externally ventilated
- Level of protection IP 44
- Class F insulation
- Single phase power supply with capacitor permanently activated and thermal protection built into the motor winding
- Three phase power supply with external protection provided by the user
- Speed of rotation 2850 rpm
- Suitable for continuous use

APPLICATIONS

- Pumping and distribution of water in domestic systems used on a continuous or intermittent basis
- Booster systems
- Washing systems, garden irrigation, fountains

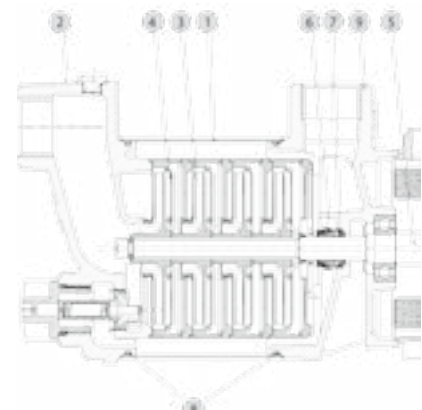
USAGE LIMITATIONS

- Type of liquid: clean water with no suspended solids or abrasive material
- Maximum liquid temperature 50°C
- Maximum recommended suction height 8 m with foot valve
- Maximum operating pressure 9 bar



DESIGN FEATURES

Component	Material
1 Outer liner (pump body)	X5 CrNi 1810 (AISI 304) Stainless steel
2 Suction flange	EN GJL 200 (ex G20) Cast iron
3 Impeller	Technopolymer with AISI 304 stainless steel shim ring
4 Diffusor	Technopolymer
5 Shaft (hydraulic end)	X5 CrNi 1810 (AISI 304) Stainless steel
6 Mechanical seal	Graphite
7 Counterface	Ceramic
8 O-rings	NBR 70 shore
9 Discharge flange Motor bracket	EN GJL 200 (ex G20) Cast iron



NOCCHI MULTINOX-A

SELF-PRIMING MULTISTAGE CENTRIFUGAL PUMPS

HYDRAULIC PERFORMANCE

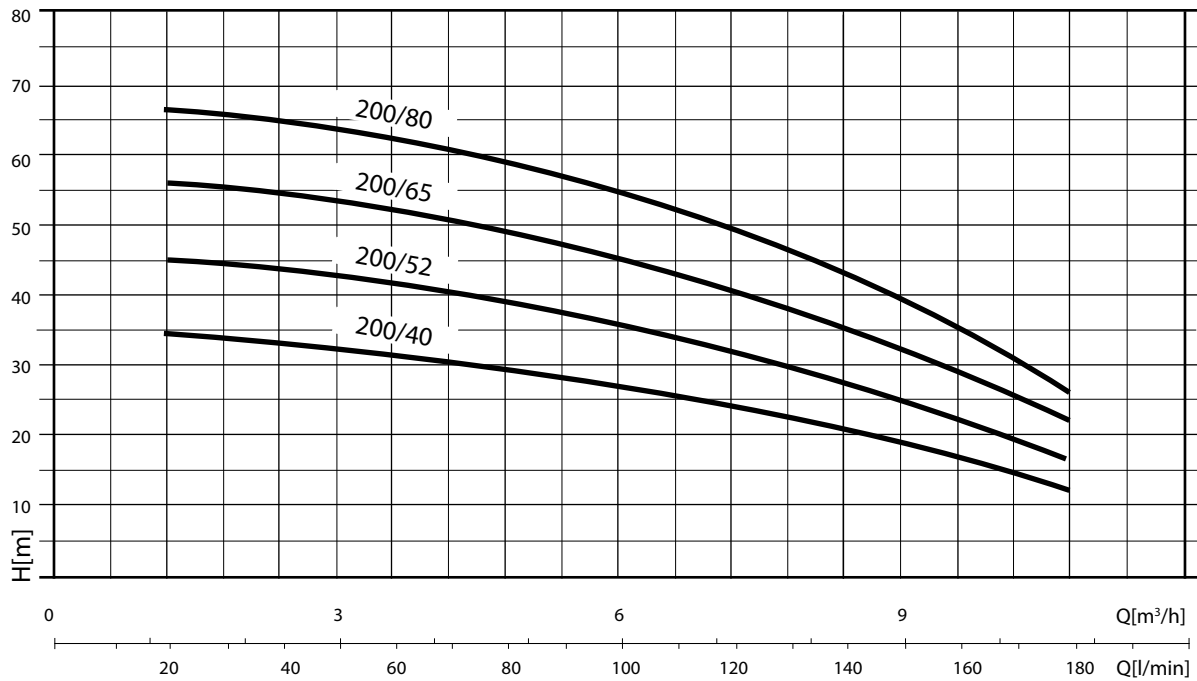


TABLE OF PERFORMANCE

MODEL	Power (P2)		Power (P1)		VOLT	In (A)	μF	Q	L/1'	20	60	100	140	180
	HP	kW	HP	kW						m³/h	1,2	3,6	6	8,4
MULTINOX-A 200/40 M MULTINOX-A 200/40 T	1,4	1	1,9 1,7	1,4 1,3	1 ~ 220 ÷ 400 V 3 ~ 230 ÷ 400 V	6,3 4-2,3	20	m.c.a. / m.c.w.	33,7	32,1	27,6	21,5	13,1	
MULTINOX-A 200/52 M MULTINOX-A 200/52 T	1,6	1,2	2,4 2,3	1,8 1,7	1 ~ 220 ÷ 400 V 3 ~ 230 ÷ 400 V	8,5 5,7-3,3	25		44,9	42,8	36,8	28,6	17,5	
MULTINOX-A 200/65 M MULTINOX-A 200/65 T	2	1,5	3 2,8	2,2 2,1	1 ~ 220 ÷ 400 V 3 ~ 230 ÷ 400 V	9,5 7,3-4,2	35		56,1	53,4	46	35,8	21,8	
MULTINOX-A 200/80 T	2,3	1,7	3,2	2,4	3 ~ 230 ÷ 400 V	8,3-4,8			67,3	64,1	55,2	42,9	26,2	

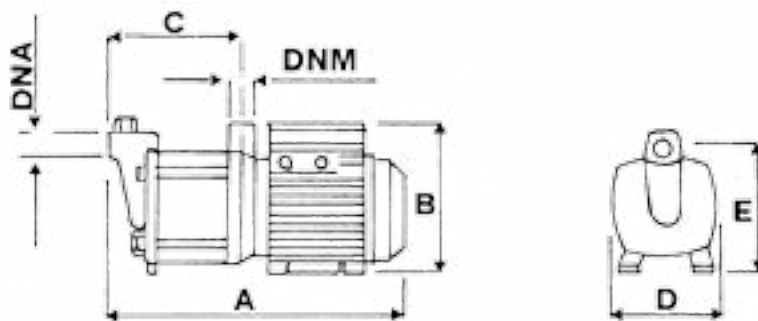


TABLE OF SIZES AND WEIGHTS

MODEL	Dimensions mm.							Weight (Kg)
	A	B	C	D	E	DNA	DNM	
MULTINOX-A 200/40	441	200	188	155	170	1" 1/4	1" 1/4	19
MULTINOX-A 200/52	469	200	215	155	170	1" 1/4	1" 1/4	21
MULTINOX-A 200/65	497	200	243	155	170	1" 1/4	1" 1/4	23
MULTINOX-A 120/48	525	200	270	155	170	1" 1/4	1" 1/4	25